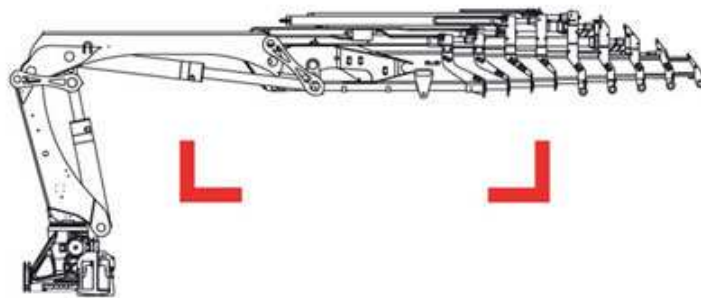
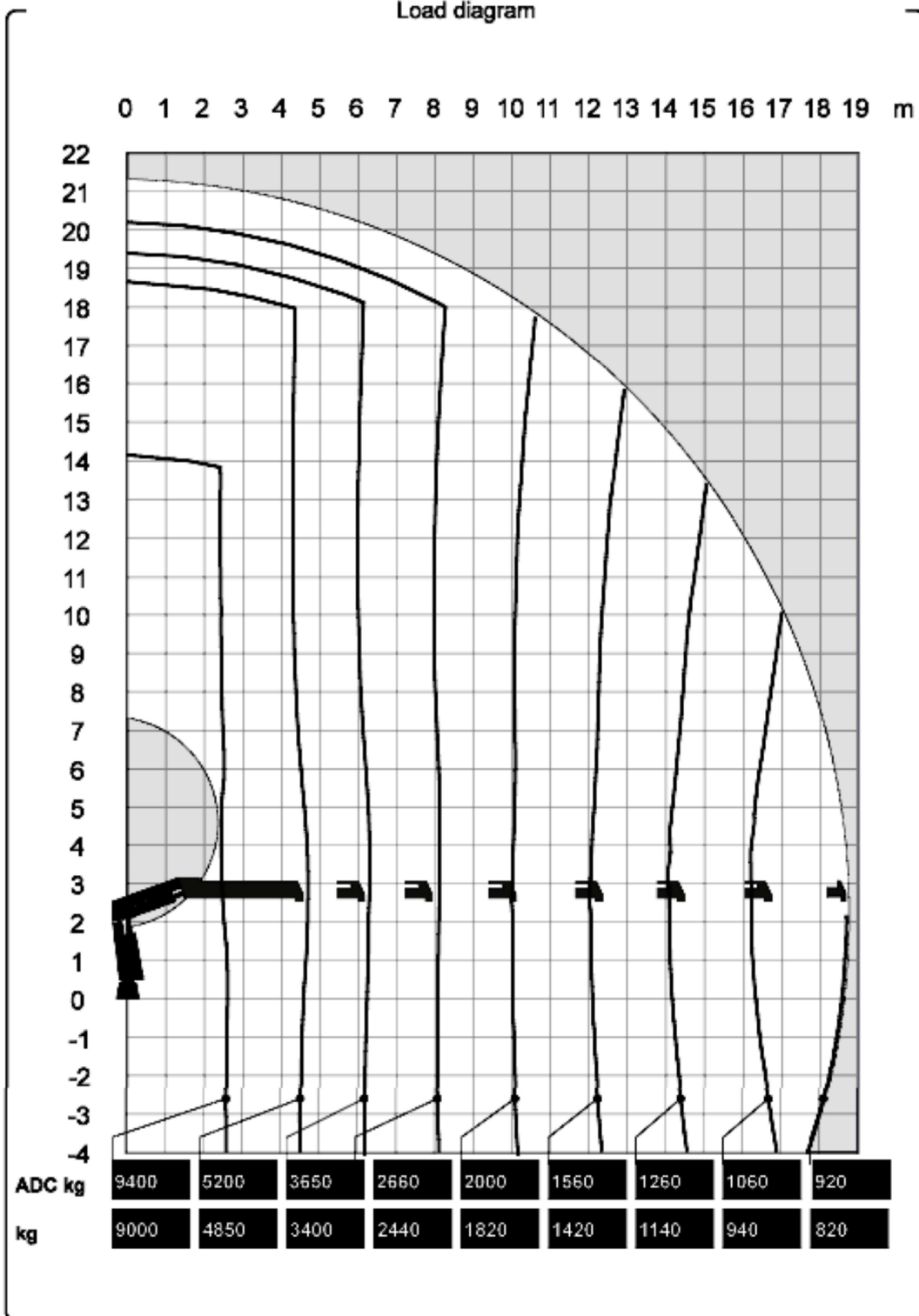


# HIAB 288 E-7 HiPro



Technical Data

Load diagram



The HIAB XS range



<b>Version</b>		HIAB 288 E-7 HiPro	
M <sub>dyn</sub>			325 kNm
Lifting capacity	kNm		225
Lifting capacity	tm		22.9
Lifting capacity (ADC)	kNm		242
Lifting capacity (ADC)	tm		24.7
Outreach - lifting capacity, standard	m-kg	2.5 - 9.400	
		4.7 - 5.200	
		6.3 - 3.650	
		8.1 - 2.660	
		10.0 - 2.000	
		12.0 - 1.560	
		14.1 - 1.260	
		16.3 - 1.060	
Outreach - lifting capacity, manual extensions	m-kg	20.1 - 780	
		21.6 - 680	
Hydraulic outreach, standard	m		18.6
Hydraulic boom extension	m		14.0 m
Outreach, manual extensions	m		21.7
Lifting height above installation level, hydr/man	m		21.2 / 24.2
Rec. oil flow	l/min		65 - 120
Power needed at rec. oil flow V80	kW		-
Power needed at rec. oil flow V91	kW		-
Working pressure	Mpa		34.0
Oil in tank	l		0 - 200
Tank capacity	l		0 - 235
Slewing angle	∅		190 - 420
Max slope viable at full capacity	°		5
Slewing torque, gross	kNm		34.0
Slewing speed 80	°/s		15
Slewing speed	°/s		15
Lifting speed at standard hydraulic outreach	m/s		2.4
Height in folded position	mm		2.335
Width in folded position	mm		2.500
Install space required. Rotation area not included	mm		1.210
Install space required with hose and pipe kit	mm		1.210
<b>Weight</b>			
Crane in standard version without support legs	kg		3.630
Top seat	kg		0
Frame attachments	kg		56 - 63
Support leg equipment	kg		381 - 478

**Data sheet**

HIAB 288 E-7 HiPro